
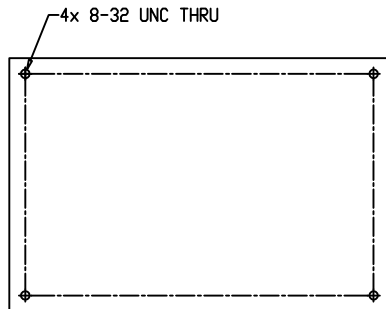
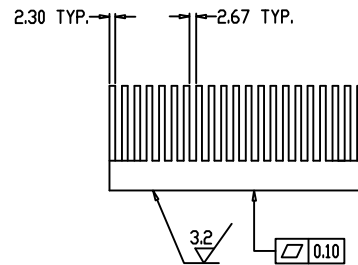
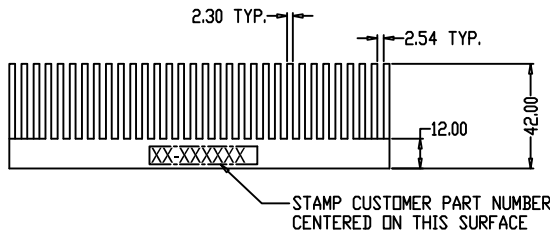
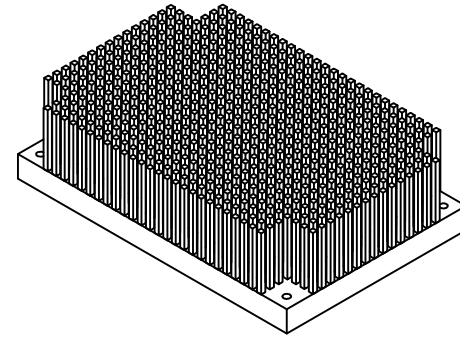
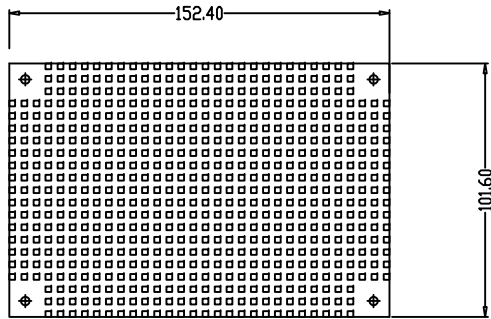


NOTICE - PROPRIETARY INFORMATION
 THE DESIGN AND RELATED INFORMATION CONTAINED HEREIN
 IS THE SOLE PROPERTY OF COFAN USA INC. THE DISCLOSURE
 OF THIS INFORMATION DOES NOT CONSTITUTE THE RELEASE OF
 ANY PROPRIETARY RIGHTS THEREIN. PERMISSION TO REPRODUCE
 THIS INFORMATION OR THE PRODUCTS DISCLOSED HEREIN
 MUST BE OBTAINED IN WRITING FROM COFAN USA INC.

REVISION HISTORY					
REV	DESCRIPTION	DRWN	CHK'D	APPVD	DATE
--	--	--	----	----	--


NOTES:

1. MATERIAL: AL6063-T5.
2. FINISH: BLACK ANODIZE.
3. DEBURR AND BREAK ALL SHARP EDGES..
4.  IS CRITICAL INSPECTION POINT. NUMBERING IN TRIANGLE IS TO BE USED FOR CROSS REFERENCE OF INSPECTION REPORT TO DRAWING DIMENSION OR FEATURE.
5. PART WEIGHT: 0.78KG/PCS,GROSS WEIGHT: 1.99KG/PCS.



THERMAL RESISTANCE: CALL (510) 490-7533 FOR MORE INFORMATION BASED ON YOUR APPLICATION

RoHS
 COMPLIANT
 2002/95/EC

DO NOT SCALE DRAWING		NAME:	DATE:	CUSTOMER DRAWING NUMBER:				
UNLESS OTHERWISE SPECIFIED DIMENSIONS ARE IN MILLIMETRE TOLERANCES ARE:		DRAWN BY:	Jun.W	08/25/08	CUSTOMER PART NUMBER:	NAME: Heatsink, Machined		
1 PLACE .X	± 0.4	CHECKED BY:			CUSTOMER DRAWING NUMBER:	SCALE:	CUS REV:	COF REV:
2 PLACE .XX	± 0.25	CHECKED BY:			20-4134	NONE	1	01
3 PLACE .XXX	± 0.13	APPR BY:			CUSTOMER PART NUMBER:	SHEET:	DATE DRAWN:	
ANGLES EXCEPT 90°	± 0.5°				20-4134	1 OF 1	Aug-25-2008	
MAXIMUM SURFACE ROUGHNESS	3.2							